

Massachusetts Maritime Academy is a fully accredited, four year, co-educational state college. Bachelor of Science degrees are awarded in Marine Engineering, Marine Transportation, Facilities and Environmental Engineering and Marine Safety and Environmental Protection. The Regiment of Cadets and the Academy's unique educational style, prepares students for positions at sea and ashore as licensed professionals or skilled graduates ready to assume managerial positions. Undergraduates travel the globe and graduates have continued to enjoy unsurpassed job placement. Students from across the nation participate in a full range of activities and athletics, as they continue to develop a pride in our tradition and maintain our tradition of pride.

1-6 Dormitory Complex

The double size rooms typically come with an ocean view with phone and internet access. A barbershop, ATM service, chapel, laundry facilities, health service, mailroom, study and TV lounges are also available in the dormitory complex.

7 Fantail Pub and Academy Store

During a break in the day or after evening meal hours, the Fantail is open for food and beverage purchases. Adjacent, you'll find the Academy Store and its array of maritime apparel and necessary gear.

7A Cadet Information Center (CIC)

The Cadet Information Center is manned by a cadet from 4PM through 8:00 AM during the week and 24 hours on weekends. CIC may be reached at (508) 830-5043.

8 Bay State Conference Center

The Charleston, Enterprise and Nantucket rooms, named after past Academy training ships, accommodate up to 125 people for public or private functions.

9 Memorial Dining Hall

Open to the public, you'll enjoy the array of flags and displays highlighting our maritime heritage.

10 Academy Training Ship

The berth has been home to MMA training vessels since 1947. Tugs, barges, whale boats, power boats and Academy yachts are docked for academic and extracurricular enjoyment.

11 Blinn Hall

Serving as a Customs House on the busiest sea-level canal in the country during the early 1930's, this is the oldest building on campus. This newly renovated building includes offices for Admissions and Financial Aid as well as a visitors' center, maritime museum and classrooms including a tiered theater-style classroom.

12 Maritime Park – Mariners Memorial

The statue represents those mariners ready to go to sea to serve their country in peace and war. The mizzen topmast across the road is from the USS Constitution. The black, marble benches are gifts from MMA Alumni in appreciation of their Academy education.

13 Storer Building

Laboratories for Electrical, Machine, Welding, Diesel, Strengths of Materials, and Liquid Cargo are located in this building.

14 Hurley Library

With over 50,000 volumes and 175 periodicals, the staff maintains the largest collection of maritime literature in S.E. Massachusetts. A collection of outstanding ship models and maritime archives are also available for public viewing. CAD labs and computer labs are also available.

15 Harrington Building

The main administrative and academic facility also houses the Full Bridge Simulator, Radar Lab, Global Marine Distress Signal Simulation Lab and Oil Spill Simulator. Continuing Education and the Naval Science Departments are also found here.

Located in the village of Buzzards Bay in the town of Bourne at the western end of the scenic Cape Cod Canal.

From the South – Take I-95 North to Providence, RI. Take I-195 East to Route 25 East. Take exit 2 off Route 25. Directions continue below.

From the West – Take I-84 to I-90 East (Massachusetts Turnpike). Take I-495 South to Route 25 East. Take exit 2 off Route 25. Directions continue below.

From the North – Take I-93 South to Route 3 South to Route 6 & 28 West to Buzzards Bay or Take Route 24 South to 495 South to Route 25 East. Take exit 2 off Route 25. Directions continue below.

Follow MMA signs on rotary to Main Street. Once on Main Street in Buzzards Bay take a left at the only set of lights onto Academy Drive.



The Campus is a four hour drive from New York City and one hour from Boston and Providence

Massachusetts Maritime Academy
101 Academy Drive
Buzzards Bay, Cape Cod, MA 02532

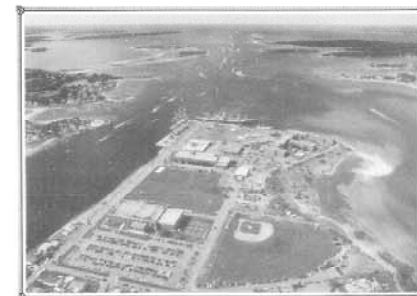
(508) 830-5000

(800) 544-3411

FAX: (508) 830-5077

www.maritime.edu

Massachusetts Maritime Academy



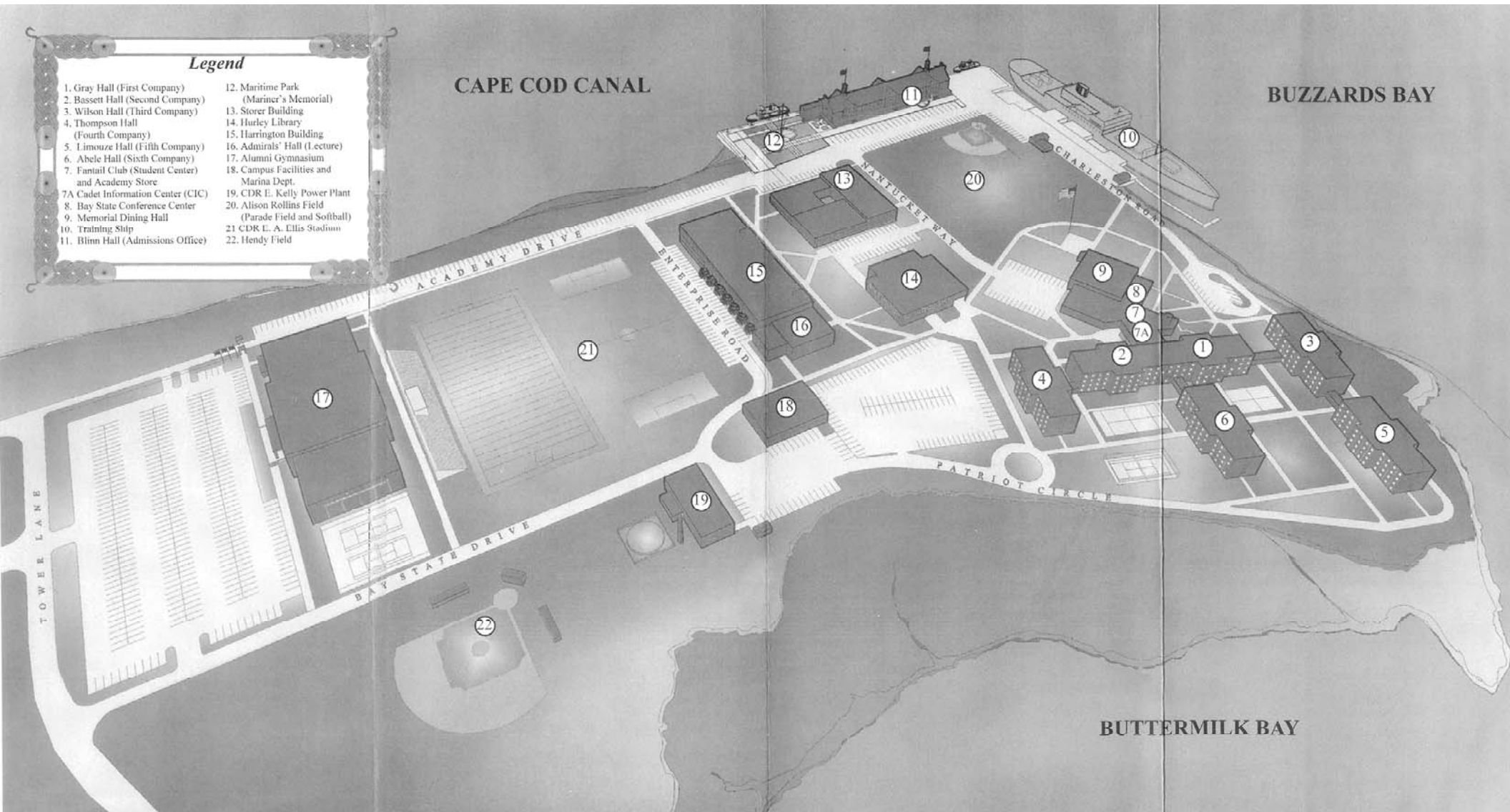
VISITOR'S GUIDE

Legend

- | | |
|--|--|
| 1. Gray Hall (First Company) | 12. Maritime Park (Mariner's Memorial) |
| 2. Bassett Hall (Second Company) | 13. Storer Building |
| 3. Wilson Hall (Third Company) | 14. Hurley Library |
| 4. Thompson Hall (Fourth Company) | 15. Harrington Building |
| 5. Limouze Hall (Fifth Company) | 16. Admirals' Hall (Lecture) |
| 6. Abele Hall (Sixth Company) | 17. Alumni Gymnasium |
| 7. Fantail Club (Student Center and Academy Store) | 18. Campus Facilities and Marina Dept. |
| 7A. Cadet Information Center (CIC) | 19. CDR E. Kelly Power Plant |
| 8. Bay State Conference Center | 20. Alison Rollins Field (Parade Field and Softball) |
| 9. Memorial Dining Hall | 21. CDR L. A. Ellis Stadium |
| 10. Training Ship | 22. Hendy Field |
| 11. Blinn Hall (Admissions Office) | |

CAPE COD CANAL

BUZZARDS BAY



BUTTERMILK BAY